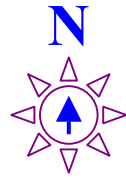


CB # 404K
02/22/2006

6 Hour & All Day launch point
just east of **Troy Mills**

Troy Mills Dam



4 Hour launch point @ **Dix Road**
1 hour downstream from Troy Mills,
and **3 hours to go** to Pinicon Ridge



CELL PHONE SERVICE ON THE RIVER

Service for your cell phones is limited along
the course of your trip:
U.S. CELLULAR is relatively good
IOWA WIRELESS is very poor

TRAVEL TIMES LISTED

The travel times listed on this map are at
a "leisurely paddling" pace. Aggressive
paddling will yield shorter trip times, lack
of paddling will yield longer times!

Red Cabin w/refrigerator on
porch at start of
"Muckersville"
1.5 hours downstream from



Keep an eye out for
Bald Eagles!

"Muckersville" Area
(Lots of cabins)

GREAT sandbar at lower
end of "Muckersville" area



2 Hour launch point @ **"Old"**
Paris Bridge – great 100'
sandbar too! (1.5 hours to go!)

"A" Frame Cabin – ½ way point
2 hours downstream from Troy Mills
2 hours to go to Pinicon Ridge



"New" Paris Bridge
1 hour to go to Boat
Concession at PRP



Right-hand turn under the wooden
pedestrian bridge to get home!



Hazards

You will encounter numerous obstacles while
on your canoe trip. Please be aware of the
hazardous nature of: downed trees, log jams,
tree stumps, bridge piers, etc. Make every
effort to avoid these hazards and follow the
safety instructions from your trip orientation.



Pinicon Ridge Boat Concession
(319) 438-1961

Dam @ Central City (CAUTION!)

May 2006

13